



# POST PROCESSING WORKFLOW

Neil Miller



# Outline

1. Hardware Layout

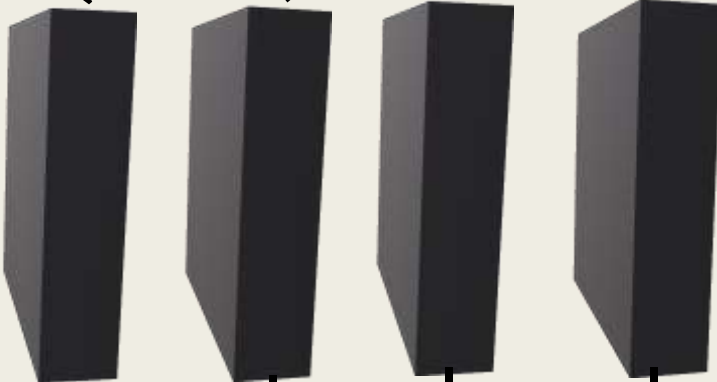
2. Workflow

3. Backup

# Hardware

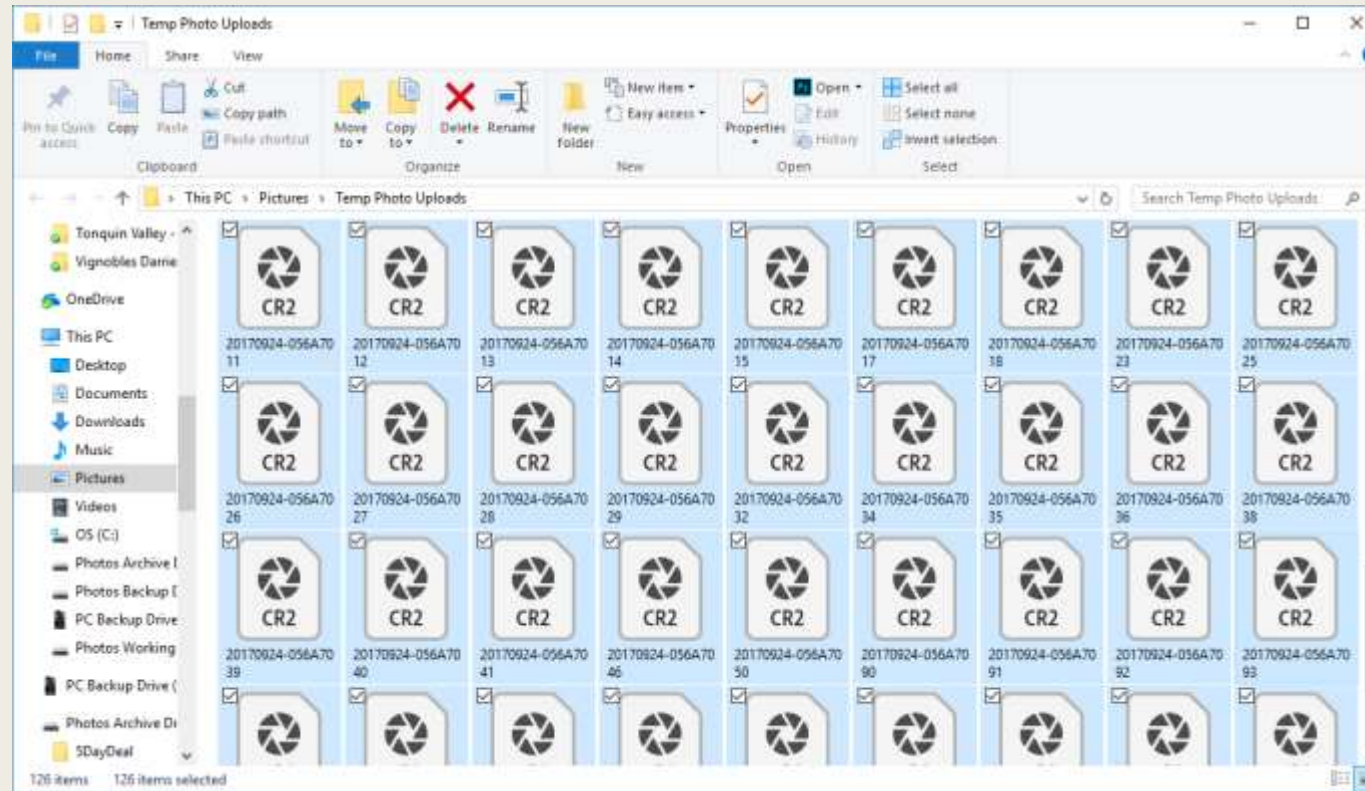


Working Drive  
Photo Backup Drive  
Photo Archive Drive  
Laptop Backup Drive

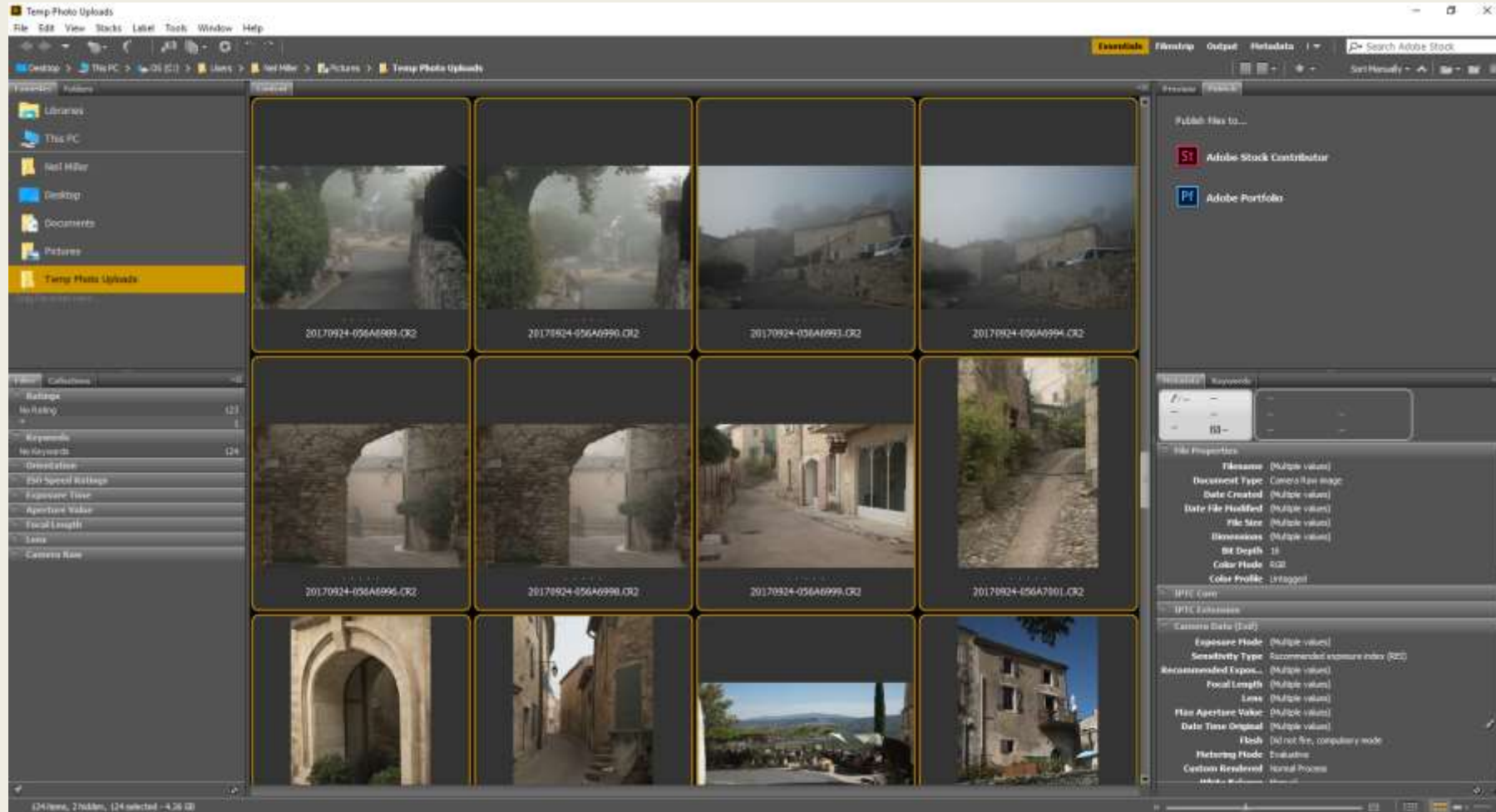


# Workflow:

1. Upload photos from camera to a temporary folder on laptop.



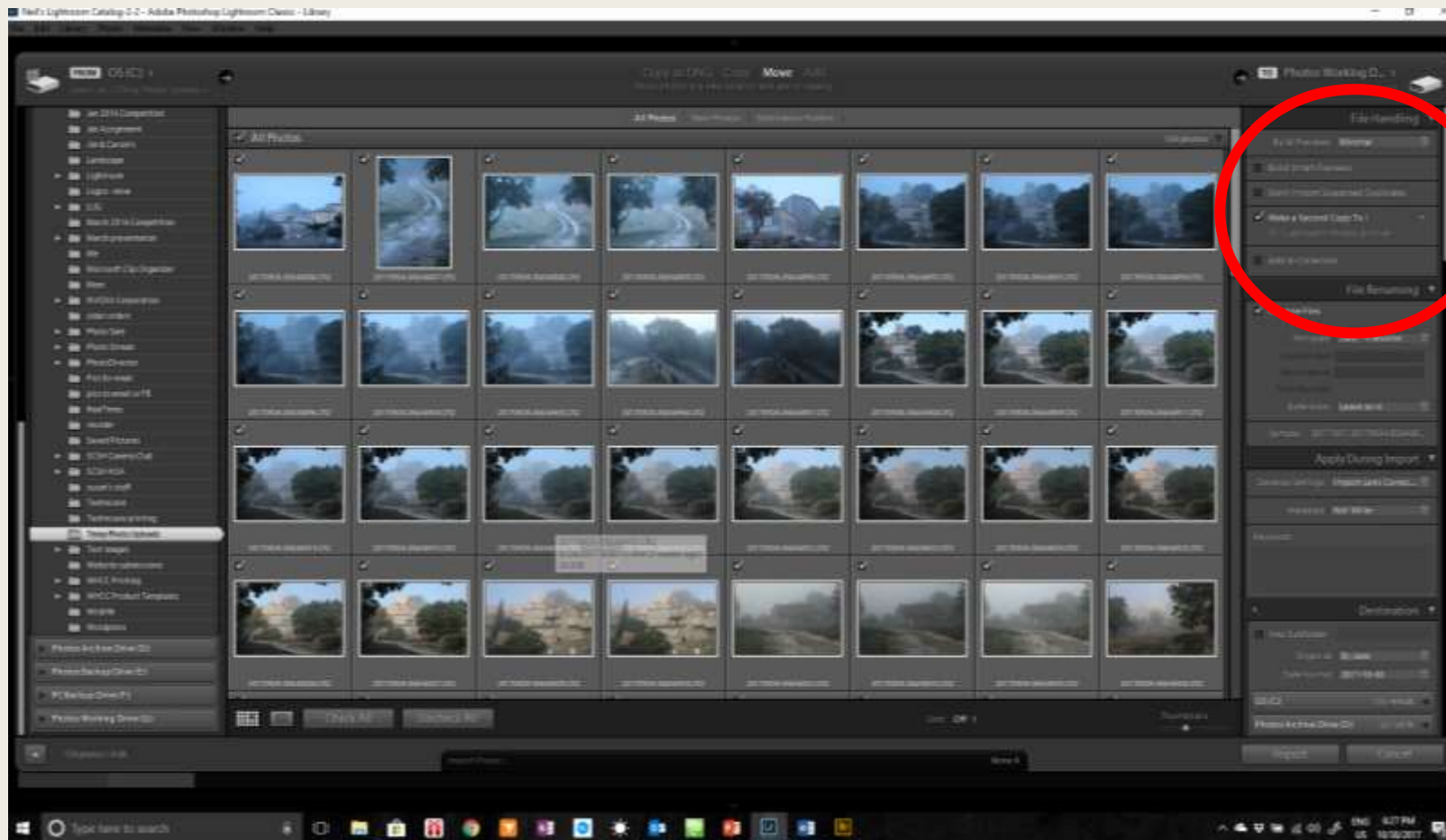
## 2. Review with Bridge, rate, delete rejects.



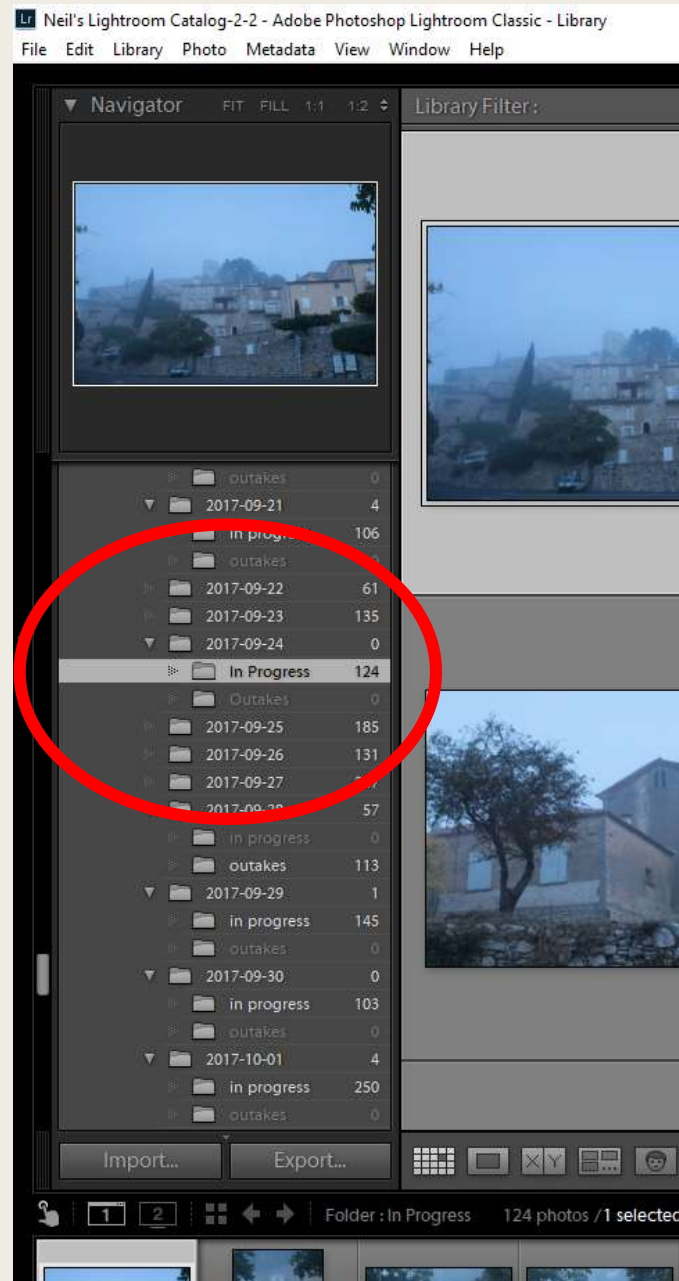


### 3. Import into Lightroom.

- Select “Move” and destination folder on Working Drive
- Check “Make second copy to” and chose folder on Photo Archive Drive
- Enter global keywords



## 4. Set up folders in Lightroom

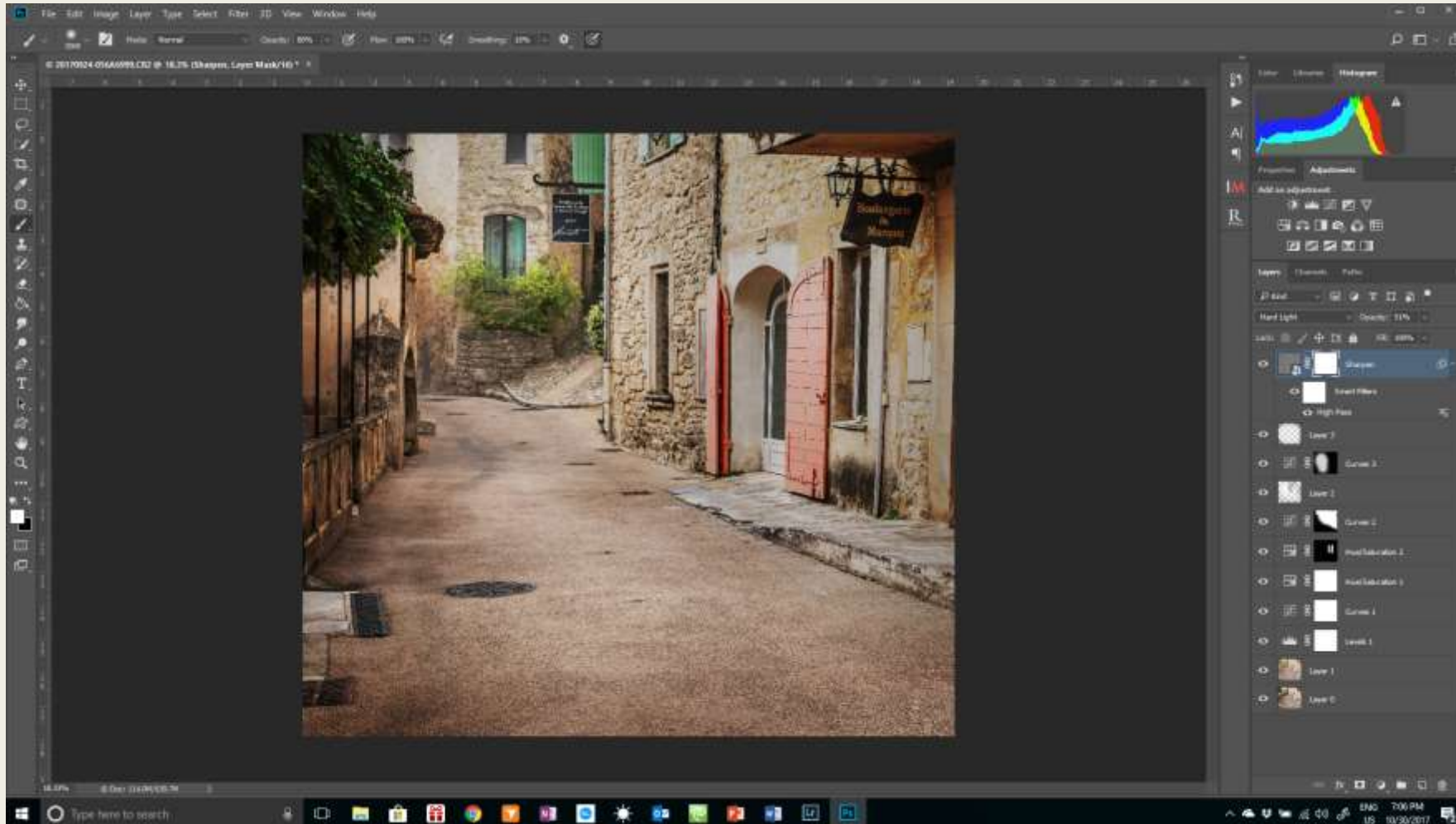




## 5. Global edits and targeted adjustments in LR



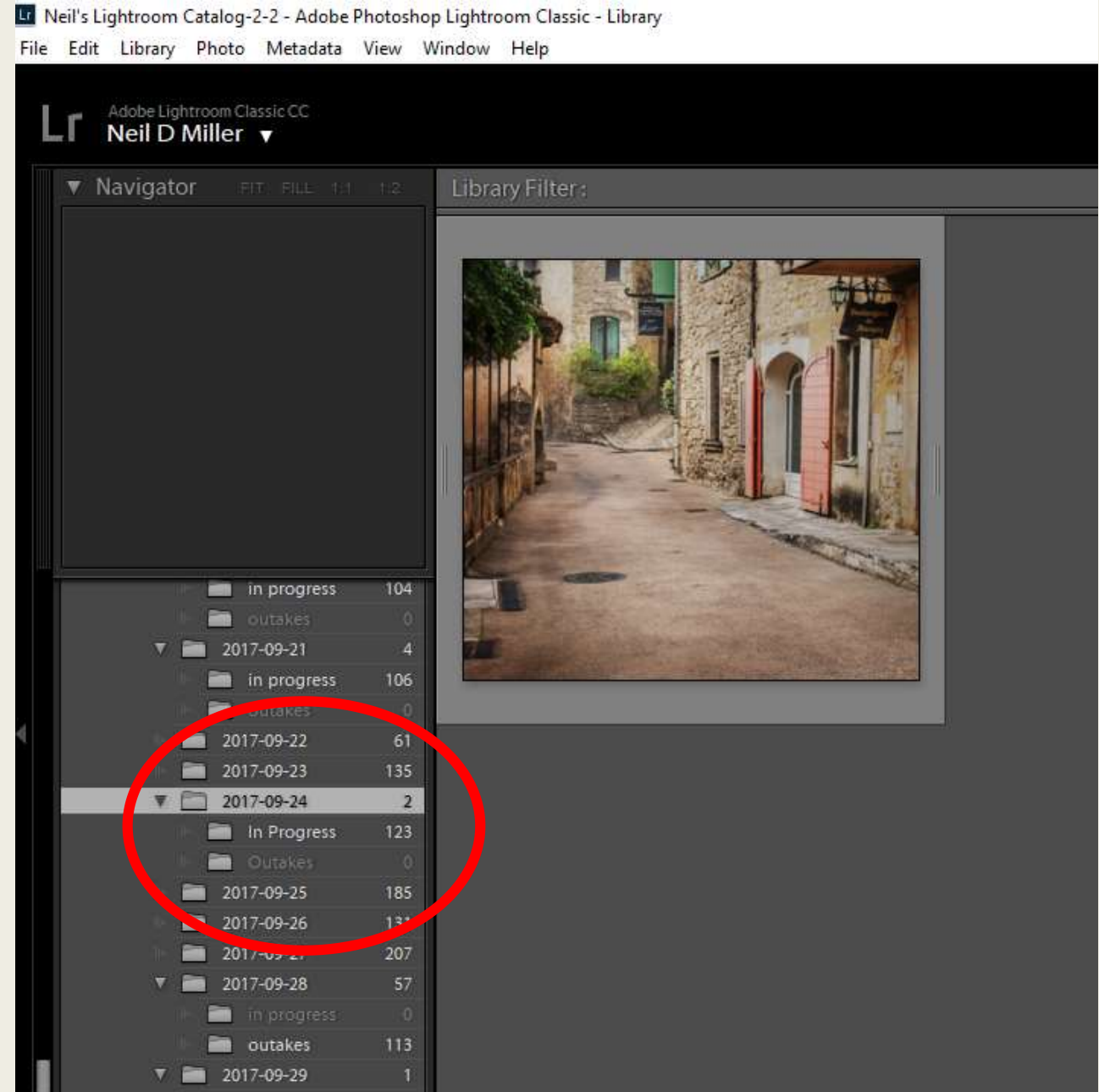
6. Export to Photoshop for further adjustments as desired. If appropriate use Nik Plugin. Save back to Lightroom
  - generally only flatten if file too big to save back to LR



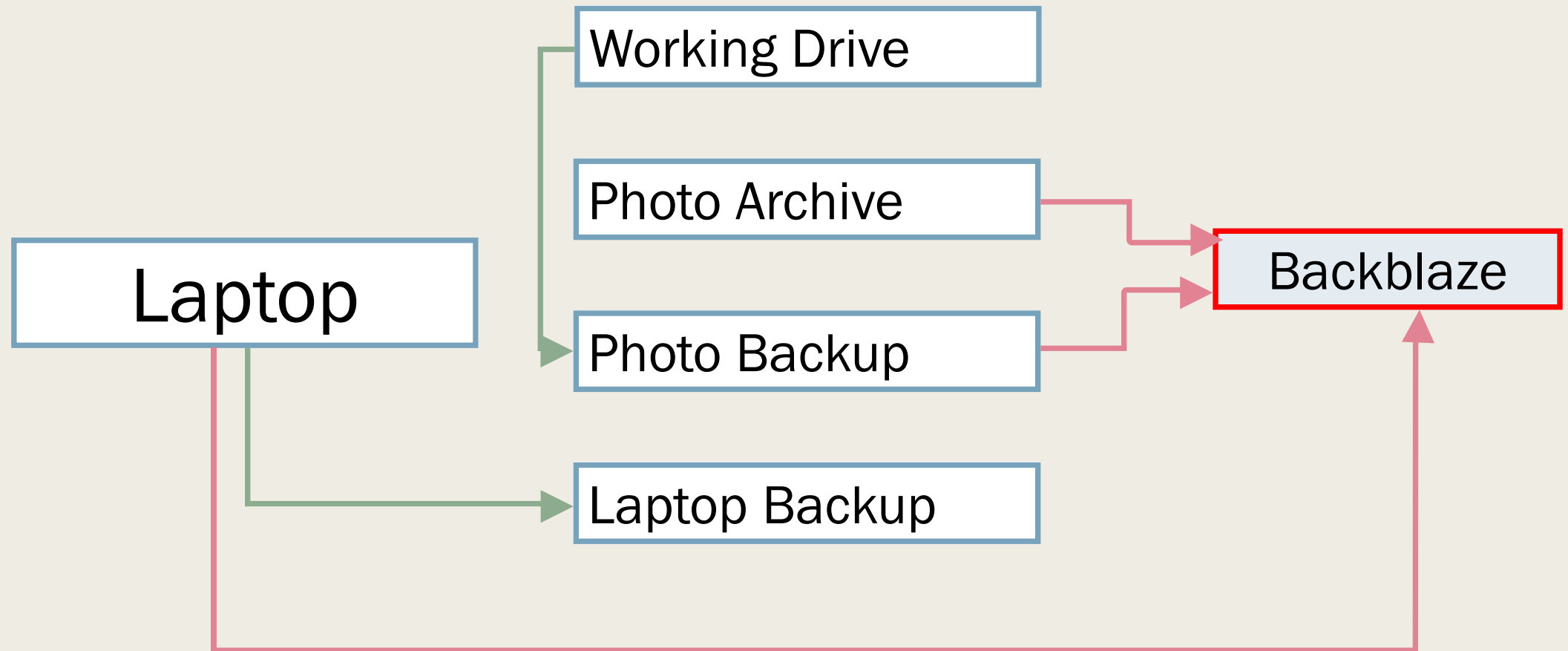
7. Move to finished photo file.

8. Export as required

9. For printing I use WHCC



# Backup



# Backblaze

- [www.backblaze.com](http://www.backblaze.com)
- Unlimited storage, backs up entire drive
- \$50/yr, \$95 for 2 years
- Backup only – NOT an archiving system (although they do have a separate facility for that) – if computer not connected >30 days then you lose data
- If you need to restore data you can either download files or, for a price, they will load your files on a hard drive and deliver to you
- Initial backup is very slow but once your files are backed up, incremental backups occur quickly in the background
- Offer a 15-day free trial