



SCSH Camera Club

In-Camera Multiple Exposures



In-Camera Multiple Exposures

Camera Requirements



DSLR: camera must have the multiple exposure function. If you have a newer camera model, most likely it will have the multiple exposure function. Check your user manual for details.

Double Exposure
For Photographers



iPhone or Android: there are a variety of Apps that will create double exposures. Search 'double exposure' to find one to download.

In-Camera Multiple Exposures

Understanding Multiple Exposures

Multiple exposure is a photographic technique that involves combining two or more exposures to create a single image. The technique yields very interesting results and allows the photographer to produce images that tell a story in a unique way that can't be achieved with a single photo.



+



=



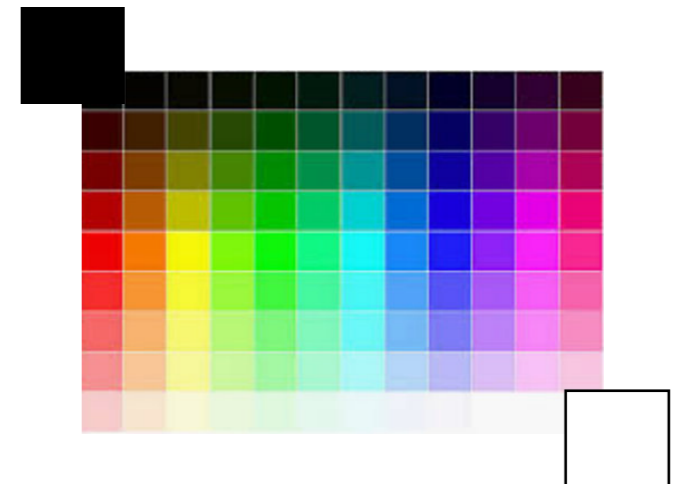
Understanding Multiple Exposures

Understanding negative and positive values is important for better control of multiple exposures.

White in photography represents burned out data. Once you burn part of your image to the max that part is gone forever. You will not be able to bring it back nor overlay anything over it (naturally).

Black represents the exposure not taking place at all. Which is perfect for overlaying the second exposure. Black parts of the image are unexposed and the second exposure will fill those parts with substance.

Black and white are on separate ends and there are all other values and colors in between that provide variety & creativity to the final photo.



Steps to shooting a Multiple Exposure

Step 1

- Shoot the silhouette.
- Make it against a white sky or a white studio backdrop.
- When shooting outdoors, a low camera angle can help get a clean, white background with no intruding clutter.
- A great time to shoot silhouette's is about an hour before sunset on sunny days. You can line up the dimmer afternoon light behind your subject and, with proper exposure, produce no flare.



Steps to shooting a Multiple Exposure

Step 2

- Find the background texture.
- Color helps, and so do line and complementary shapes.
- As with the silhouette, find a texture that can be captured on white, with a minimum of surrounding clutter.



In-Camera Multiple Exposures

Steps to shooting a Multiple Exposure

Step 3

- Prepare your camera.
- When you've found the texture to place within the silhouetted figure, you're ready to make the composite.
- Find and select the multi-exposure setting on your camera.
- Switch your camera to live view.
- Find and select the base silhouette on the memory card. It will then be displayed on the LCD screen.



Steps to shooting a Multiple Exposure

Final Step

- Line up the images.
- With the silhouette displayed on your camera's LCD screen, aim your lens at the textured subject.
- The texture will appear within the black silhouette.
- Finesse the texture's effect by adjusting the camera angle, zoom, and exposure settings.
- When the textured overlay complements and fits well within the silhouette, fire away. Your camera will automatically merge the two.



In-Camera Multiple Exposures



In-Camera Multiple Exposures



In-Camera Multiple Exposures

Inspiring Multiple Exposures found Online



In-Camera Multiple Exposures



In-Camera Multiple Exposures



In-Camera Multiple Exposures



In-Camera Multiple Exposures

